

**GOING NORTH: POWERBEEKEEPING IN PENNSYLVANIA**



*by*  
***Mel Disselkoen***



# **WESTERN PENNSYLVANIA BEEKEEPING SEMINAR**

**February 19-20, 2010**

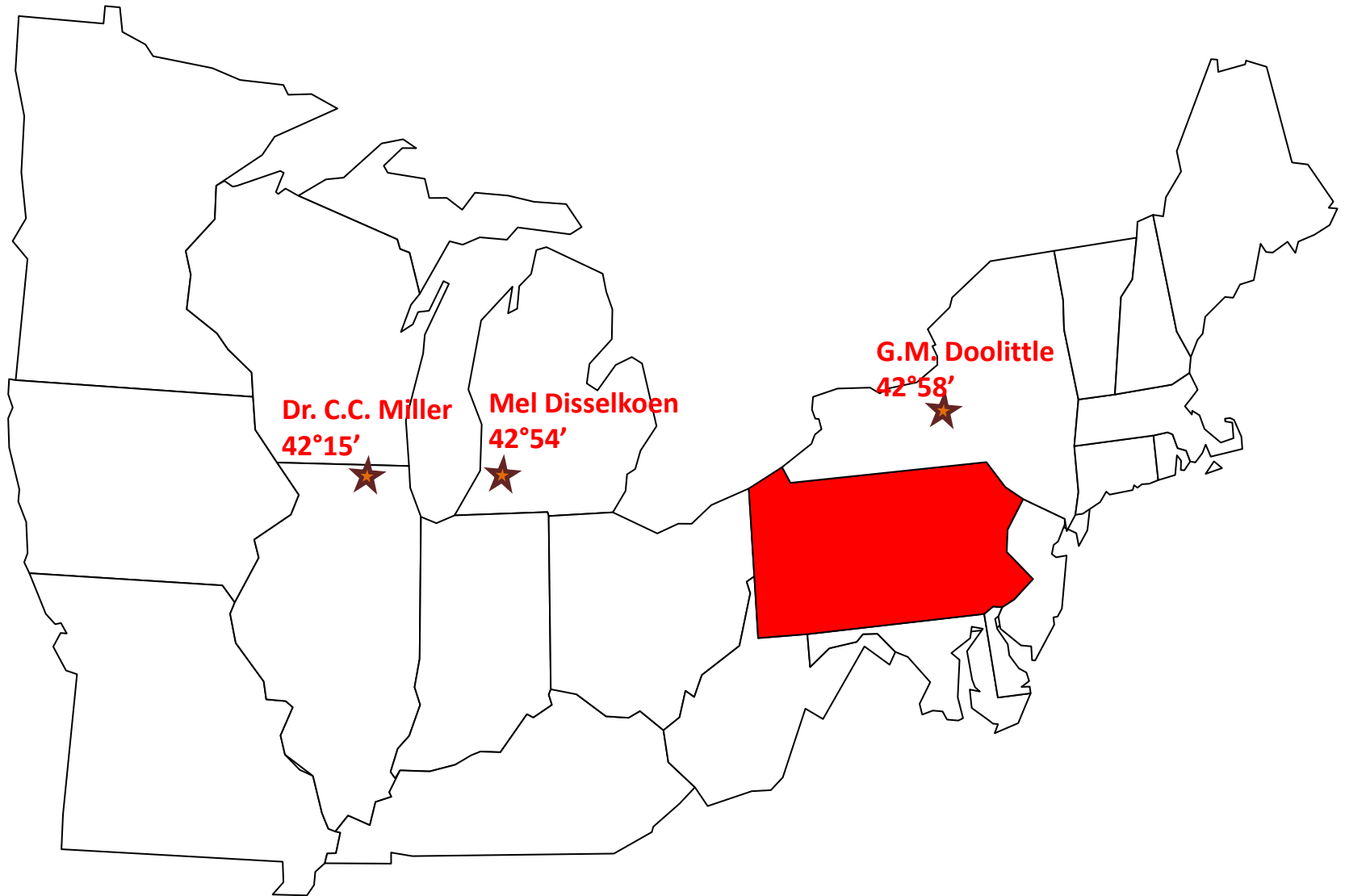


**HOW TO KEEP BEES UP NORTH?: GET ADVICE FROM THE MASTERS**

**Dr. C. C. Miller *Fifty Years Among The Bees***

**G.M. Doolittle *Scientific Queen Rearing*  
*and A Year's Work In An Out-Apiary***

## 43<sup>rd</sup> PARALLEL: WHERE IT ALL STARTED



**Parallels are approximately 70 miles wide and Spring moves North at approximately 10 miles/day**

# **LET'S GO BACK: GREAT LAKES AND ONTARIO BEEKEEPERS HAVE IDEAL CLIMATE, LUSH FLORA, AND PROFITABLE MARKETS**



Climate favors both May and July Starts

Intense, overlapping honey flows

Climate doesn't favor Africanized bee nor Small Hive Beetle

Opportunity for local and distance markets

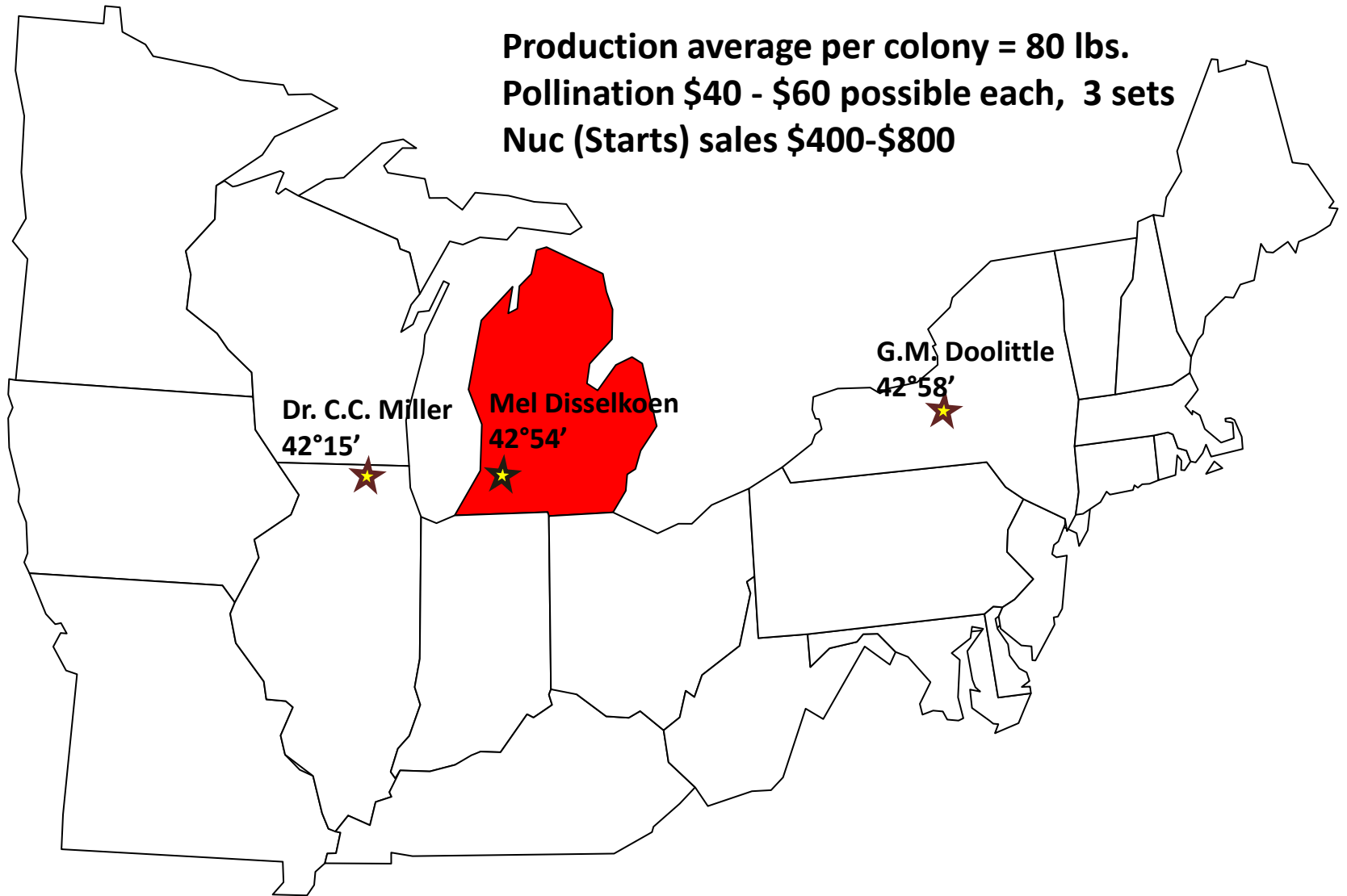
No need to import

Opportunity to export

Gatekeeper location

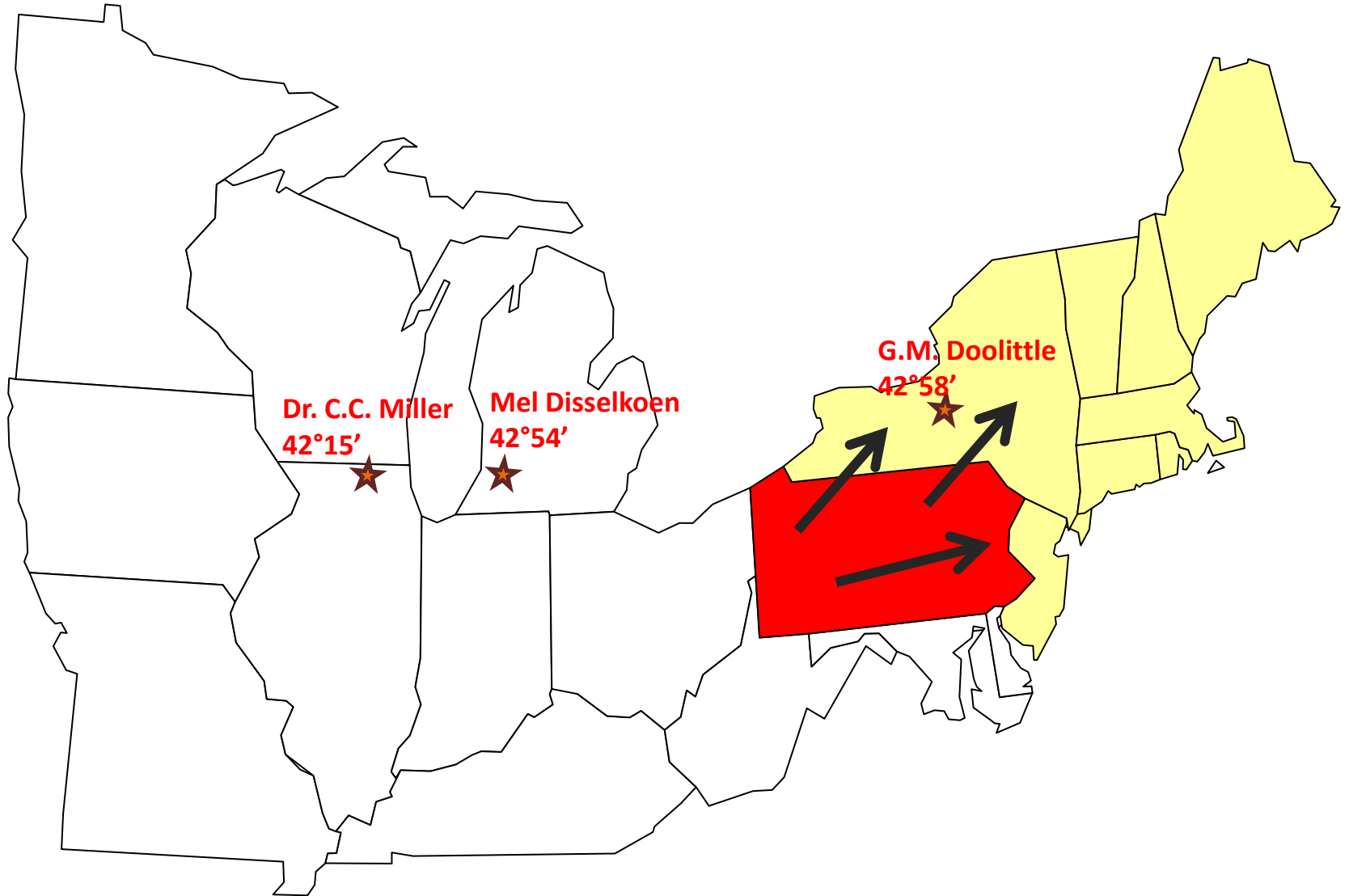
# MICHIGAN: PENINSULA BEEKEEPING

Production average per colony = 80 lbs.  
Pollination \$40 - \$60 possible each, 3 sets  
Nuc (Starts) sales \$400-\$800



# PENNSYLVANIA: GATEWAY TO THE NORTHEAST MARKET

From Lake Erie To The Delaware River





# HOW TO GET THERE: A MODEL FOR SUCCESS

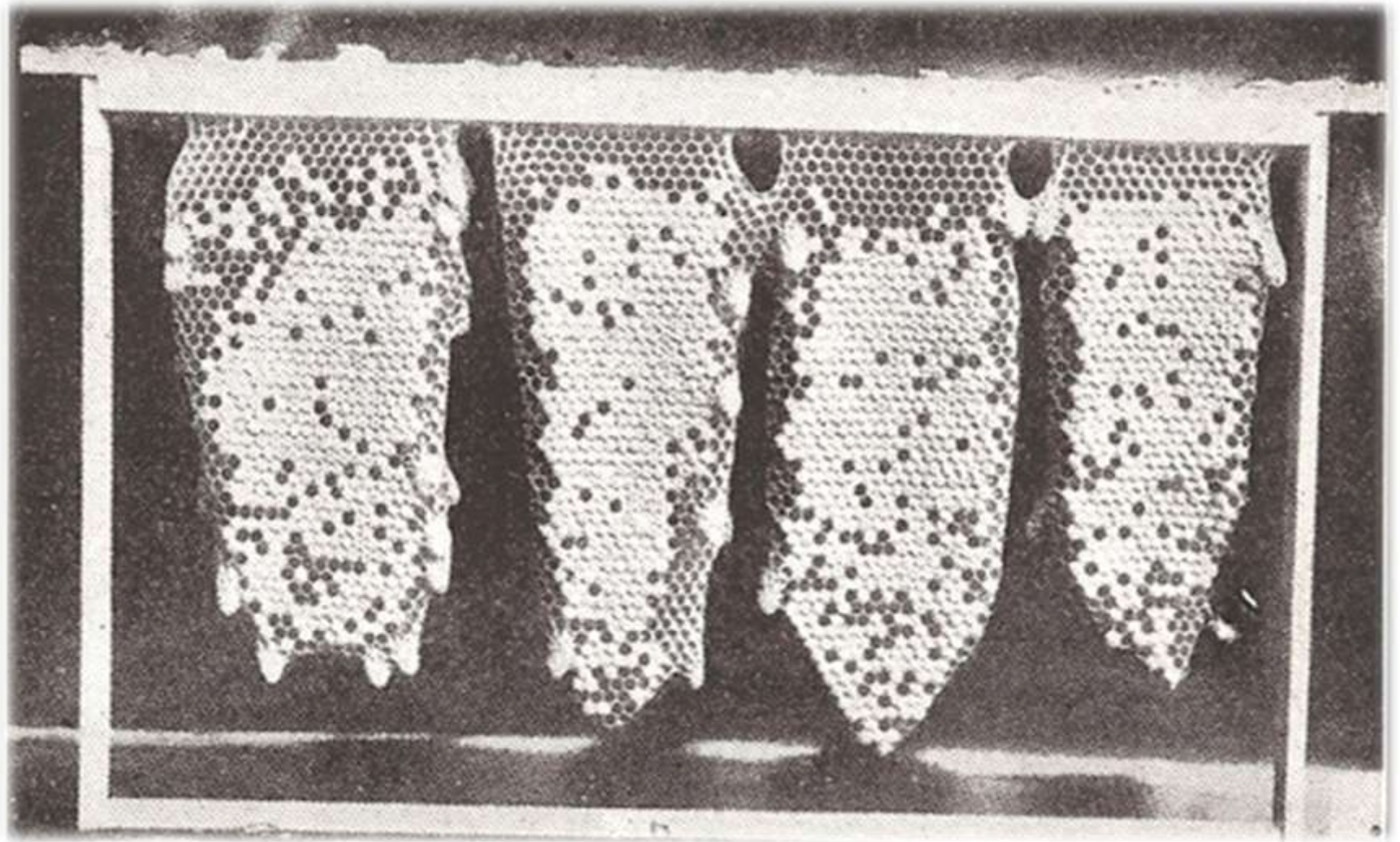


# GRAFTING

1982



**DR. C. C. MILLER:** “Give them larvae of all ages from which to select, and they always choose that which is two days old, or younger . . . . I have never known bees to start a cell after the larvae were too old.”



# OTS

1985



**SEVEN DAYS LATER: SEALED QUEEN CELLS**



**SEVEN DAYS LATER: SEALED QUEEN CELLS**

